



whitedriveproducts

For Immediate Release:

Contact:

Gregory Moreland
Marketing Manager
White Drive Products
110 Bill Bryan Blvd.
Hopkinsville, KY 42241
Phone: 270-885-1110
Fax: 270-886-8462
gmoreland@whitedriveproducts.com

New Hydraulic Motor Series from White Drive Products

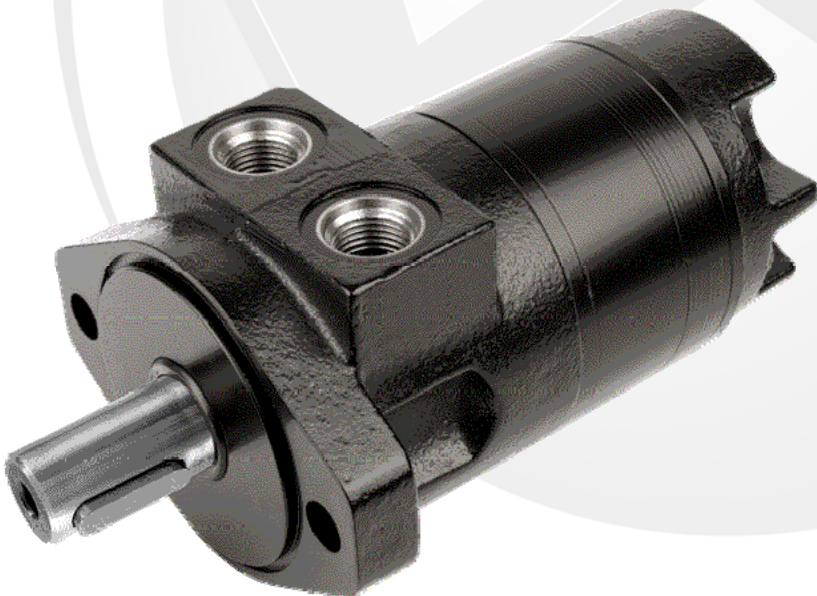
White Drive Products (Hopkinsville, KY) has released a new family of low speed high torque hydraulic motors. Designated the WG series, these motors feature flow rates up to 57 LPM [15 GPM] continuous, torque to 548 Nm [4850 lb-in] continuous, and pressures up to 138 bar [2000 PSI] continuous.

Intended applications include auger drives and spreaders, industrial sweepers, conveyor drives, and medium duty wheel drives.

WG motor features include precision rollers to eliminate sliding friction and improve motor efficiency, heavy-duty drive links, high pressure shaft seals, and needle bearings for increased shaft load capability.

12 displacements are available ranging from 41 cc [2.5 in³] / revolution to 404 cc [24.4 in³] / revolution. Six (6) shaft options, five (5) mounting options, and a wide variety of porting options are available to meet all application needs.

More information is available at
www.whitedriveproducts.com/wg.html



###